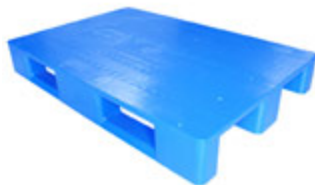
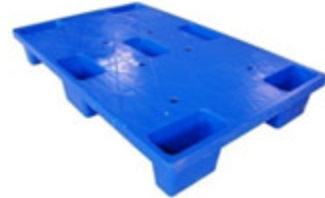
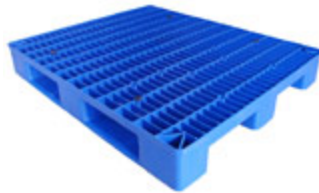




ARAVALI ENGINEERS

AN ISO - 9001 : 2000 COMPANY

Since 1987



Plastic Pallets

Our plastic pallets are high quality and durable. We offer pallets in virgin HDPE and recycled plastic (Black color) manufactured under strict quality control procedures. Our plastic pallets have been extensively field tested and have been in efficient service for a number of years.

- [3 Runner Pallets](#)
- [7 Feet Pallets](#)
- [9 Feet Pallets](#)
- [Cross Bottom Pallets](#)
- [Double Face Pallets](#)
- [Flat Pallets](#)
- [Grid Pallets](#)
- [Heavy Duty Pallets](#)
- [Mat Pallets](#)

Benefits

Characteristics of Plastic Pallets

- Light weight and easy to handle
- Recyclable
- Cost - effective
- Impervious to acids, fats, solvents and odors
- Resistant to moisture, insects & fungi
- Can withstand deep freezing & steam cleaning
- Allow for easy handling with forklifts or pallet jacks
- Available in a variety of colours
- Strong and durable
- In addition to bags, cartons and industrial hardware our pallets are suitable for food, fresh produce, meat, fish, beverages & chemicals

Benefits over wooden pallets

- Reusable

Wooden pallets have a limited life in terms of number of reuse cycles after which they usually break or deform.

- Non - toxic, Hygenic & Easy to clean

Plastic pallets are easily sanitised by steam cleaning and pressure washing making them hygenic. Wooden pallets on the other hand cannot be sanitised and might have to be disposed because of hygiene concerns, especially in pharma and food industry.

- Impervious to most fluids

Plastic pallets are immune to moisture, fats, acids, solvents and other chemicals.

- Pest free

Wooden pallets always have a possibility of getting infested with different kinds of pests whereas plastic pallets are completely pest resistant.

- Cost effective

Plastic pallets have longer reuseability cycles and a longer life as compared to wooden pallets. They prove to be more cost effective per trip than wooden pallets.

- No recurring costs

Plastic pallets are free of any nails or splinters and don't have any consequent repairing costs.

- Saves trees

According to estimates every 30 plastic pallets used instead of wooden pallets save approximately one tree.

3 Runner Pallets

Flat Pallets (Series 3FL)

Model No.	Dimensions			Max Loading Capacity (MT)			Pallet Wt. (Kg)
	L (mm)	B (mm)	H (mm)	Dynamic Load (Metric Tonnes)	Static Load (Metric Tonnes)	Rack Load (Metric Tonnes)	
3FL1208	1200	800	160	1.00	5.00	0.60	13.20

3FLA1210	1200	1000	160	1.50	6.00	0.80	16.40
3FLB1210	1200	1000	150	1.20	6.00	0.60	14.60
3FLI4-1210	1200	1000	150	1.50	6.00	0.80	20.40
3FLI7-1210	1200	1000	150	1.50	6.00	1.00	20.40

Bottom Side



Top side



Grid Pallets (Series 3G)

Model No.	Dimensions			Max Loading Capacity (MT)			Pallet Wt. (Kg)
	L (mm)	B (mm)	H (mm)	Dynamic Load (Metric Tonnes)	Static Load (Metric Tonnes)	Rack Load (Metric Tonnes)	
3G1008	1000	800	160	1.00	4.00	0.50	10.10
3G1010	1000	1000	160	1.00	4.00	0.50	12.00
3G1111	1100	1100	155	1.00	4.00	0.60	14.60
3G1208	1200	800	155	1.00	4.00	0.50	11.60
3G1210	1250	1000	160	1.50	4.00		15.70
3G1311	1300	1100	155	1.20	6.00	0.60	16.50
3GA1210	1200	1000	160	1.40	6.00	0.70	16.10
3GB1210	1200	1000	165	1.20	6.00	0.60	13.70
3GC1210	1200	1000	155	1.20	6.00	0.60	13.90
3GH1212	1200	1200	170	1.20	6.00	0.80	20.60
3GI3-1210	1200	1000	165	1.50	6.00	0.80	16.70

3GI4-1208	1200	800	155	1.50	6.00	0.70	14.00
3GI4-1210	1200	1000	155	1.50	6.00	0.70	16.70
3GI4-1311	1300	1100	155	1.50	6.00	0.80	19.60
3GI7-1208	1200	800	155	1.50	8.00	1.00	17.60
3GI8-1210	1200	1000	155	1.50	8.00	1.00	20.00
3GI8-1311	1300	1100	155	1.50	6.00	1.00	23.50
3GI4-1111	1100	1100	155	1.50	6.00	0.80	18.10
3GI8-1111	1100	1100	155	1.50	8.00	1.00	21.60
3GL1212	1200	1200	170	1.20	6.00	0.80	19.00

Top Side



Bottom Side



PALLET-LOADS :



Static load: Weight that a pallet can carry, placed on a flat floor.



Dynamic load: Weight that a pallet can carry in motion, like when it is placed on the forks of a forklift.



Racking load: Weight that a pallet can carry when placed in a pallet-rack.

7 Feet Pallets

Model No.	Dimensions			Max Loading Capacity (MT)			Pallet Wt. (Kg)
	L (mm)	B (mm)	H (mm)	Dynamic Load (Metric Tonnes)	Static Load (Metric Tonnes)	Rack Load (Metric Tonnes)	
7F1208	1200	800	150	0.50	1.20	Not suitable for rack loading	8.30
7FA1107	1150	730	150	0.30	1.00	Not suitable for rack loading	7.20
7FB1107	1125	700	150	0.30	1.00	Not suitable for rack loading	7.40

Top Side



Bottom side



PALLET-LOADS :



Static load: Weight that a pallet can carry, placed on a flat floor.



Dynamic load: Weight that a pallet can carry in motion, like when it is placed on the forks of a forklift.



Racking load: Weight that a pallet can carry when placed in a pallet-rack.

9 Feet Pallets

With Grid Top (Series 9FG)

Model No.	Dimensions			Max Loading Capacity (MT)			Pallet Wt. (Kg)
	L (mm)	B (mm)	H (mm)	Dynamic Load (Metric Tonnes)	Static Load (Metric Tonnes)	Rack Load (Metric Tonnes)	
9FG1111	1100	1100	145	0.50	1.50	Not suitable for rack loading	10.80
9FG1211	1200	1100	140	0.50	1.20	Not suitable for rack loading	8.60
9FG1212	1200	1200	140	0.40	1.50	Not suitable for rack loading	9.40
9FGA1210	1200	1000	140	0.40	1.20	Not suitable for rack loading	7.80
9FGB1210	1200	1000	140	1.00	4.00	Not suitable for rack loading	12.00

Top Side

Bottom side



With Flat Top (Series 9F)

Model No.	Dimensions			Max Loading Capacity (MT)			Pallet Wt. (Kg)
	L (mm)	B (mm)	H (mm)	Dynamic Load (Metric Tonnes)	Static Load (Metric Tonnes)	Rack Load (Metric Tonnes)	
9FA1210	1200	1000	130	1.00	4.00	Not suitable for rack loading	13.80
9FB1210	1200	1000	140	1.00	4.00	Not suitable for rack loading	13.85
9FH1412	1400	1200	140	1.20	6.00	Not suitable for rack loading	22.20

Top Side



Bottom Side



PALLET-LOADS :



Static load: Weight that a pallet can carry, placed on a flat floor.



Dynamic load: Weight that a pallet can carry in motion, like when it is placed on the forks of a forklift.



Racking load: Weight that a pallet can carry when placed in a pallet-rack.

Cross Bottom Pallets

With Flat Top (Beer Use) (Series FX)

Model No.	Dimensions			Max Loading Capacity (MT)		
	L (mm)	B (mm)	H (mm)	Dynamic Load (Metric Tonnes)	Static Load (Metric Tonnes)	Pallet Wt. (Kg)
FX1210	1200	1000	150	1.20	6.00	18.60

Top Side



Bottom side



With Grid Top (Series XG)

Model No.	Dimensions			Max Loading Capacity (MT)			Pallet Wt. (Kg)
	L (mm)	B (mm)	H (mm)	Dynamic Load (Metric Tonnes)	Static Load (Metric Tonnes)	Rack Load (Metric Tonnes)	
XG1208	1200	800	150	1.00	4.00	0.40	12.00
XG1212	1200	1200	150	1.20	6.00	0.80	20.00
XG1311	1300	1100	150	1.00	4.00	0.60	15.80
XGA1111	1100	1100	150	1.00	4.00	0.40	12.00
XGA1210	1200	1000	125	0.60	1.50	0.20	8.05
XGB1111	1100	1100	150	1.00	5.00	0.60	14.80
XGB1210	1200	1000	150	1.00	4.00	0.50	12.50
XGC1111	1100	1100	125	0.50	1.50	0.20	8.50
XGC1210	1200	1000	150	1.20	5.00	0.60	13.90
XGI1210	1200	1000	150	1.50	8.00	0.80	16.80

Top Side



Bottom Side



PALLET-LOADS :



Static load: Weight that a pallet can carry, placed on a flat floor.



Dynamic load: Weight that a pallet can carry in motion, like when it is placed on the forks of a forklift.



Racking load: Weight that a pallet can carry when placed in a pallet-rack.

Double Face Pallets

With Grid Top (Series 2FG)

Model No.	Dimensions			Max Loading Capacity (MT)			Pallet Wt. (Kg)
	L (mm)	B (mm)	H (mm)	Dynamic Load (Metric Tonnes)	Static Load (Metric Tonnes)	Rack Load (Metric Tonnes)	
2FG1111	1100	1100	150	1.20	6.00	0.80	18.50
2FG1210	1200	1000	150	1.50	6.00	0.80	23.50
2FG1212	1200	1200	150	1.50	8.00	1.00	27.80
2FG1311	1300	1100	150	1.50	6.00	1.00	22.70
2FG1411	1400	1100	150	1.50	6.00	1.00	26.30
2FG1614	1600	1400	150	1.50	8.00	1.00	29.00
2FGA1412	1400	1200	150	2.00	8.00	1.30	29.60
2FGB1412	1400	1200	150	1.50	8.00	1.00	26.40
2FGI4-1614	1600	1400	150	2.00	10.00	1.20	34.90
2FGI8-1614	1600	1400	150	2.00	10.00	1.40	40.00

Top Side

Bottom side



Welded Pallets (Series 2FW)

Model No.	Dimensions			Max Loading Capacity (MT)			Pallet Wt. (Kg)
	L (mm)	B (mm)	H (mm)	Dynamic Load (Metric Tonnes)	Static Load (Metric Tonnes)	Rack Load (Metric Tonnes)	
2FW1412	1400	1200	150	1.50	8.00	1.50	33.20
2FW1515	1500	1500	150	2.00	10.00	1.50	45.20

Top Side



Bottom Side



PALLET-LOADS :



Static load: Weight that a pallet can carry, placed on a flat floor.



Dynamic load: Weight that a pallet can carry in motion, like when it is placed on the forks of a forklift.



Racking load: Weight that a pallet can carry when placed in a pallet-rack.

Flat Pallets

With 3 runners (Series 3FL)

Model No.	Dimensions			Max Loading Capacity (MT)			Pallet Wt. (Kg)
	L (mm)	B (mm)	H (mm)	Dynamic Load (Metric Tonnes)	Static Load (Metric Tonnes)	Rack Load (Metric Tonnes)	
3FL1208	1200	800	160	1.00	5.00	0.60	13.20
3FLA1210	1200	1000	160	1.50	6.00	0.80	16.40
3FLB1210	1200	1000	150	1.20	6.00	0.60	14.60
3FLI4-1210	1200	1000	150	1.50	6.00	0.80	20.40
3FLI7-1210	1200	1000	150	1.50	6.00	1.00	20.40

Top Side



Bottom side



With 7 feet (Series 7F)

Model No.	Dimensions			Max Loading Capacity (MT)			Pallet Wt. (Kg)
	L (mm)	B (mm)	H (mm)	Dynamic Load (Metric Tonnes)	Static Load (Metric Tonnes)	Rack Load (Metric Tonnes)	

7F1208	1200	800	150	0.50	1.20	Not suitable for rack loading	8.30
7FA1107	1150	730	150	0.30	1.00	Not suitable for rack loading	7.20
7FB1107	1125	700	150	0.30	1.00	Not suitable for rack loading	7.40

Top Side



Bottom side



With 9 Feet (Series 9F)

Model No.	Dimensions			Max Loading Capacity (MT)			Pallet Wt. (Kg)
	L (mm)	B (mm)	H (mm)	Dynamic Load (Metric Tonnes)	Static Load (Metric Tonnes)	Rack Load (Metric Tonnes)	
9FA1210	1200	1000	130	1.00	4.00	Not suitable for rack loading	13.80
9FB1210	1200	1000	140	1.00	4.00	Not suitable for rack loading	13.85
9FH1412	1400	1200	140	1.20	6.00	Not suitable for rack loading	22.20

Top Side



Bottom Side



With Cross Bottom (Series FX)

Model No.	Dimensions			Max Loading Capacity (MT)		Pallet Wt. (Kg)
	L (mm)	B (mm)	H (mm)	Dynamic Load (Metric Tonnes)	Static Load (Metric Tonnes)	
FX1210	1200	1000	150	1.20	6.00	18.60

Top Side



Bottom Side



PALLET-LOADS :



Static load: Weight that a pallet can carry, placed on a flat floor.



Dynamic load: Weight that a pallet can carry in motion, like when it is placed on the forks of a forklift.



Racking load: Weight that a pallet can carry when placed in a pallet-rack.

Grid Pallets

With Double Face (Series 2FG)

Model No.	Dimensions			Max Loading Capacity (MT)			Pallet Wt. (Kg)
	L (mm)	B (mm)	H (mm)	Dynamic Load (Metric Tonnes)	Static Load (Metric Tonnes)	Rack Load (Metric Tonnes)	
2FG1111	1100	1100	150	1.20	6.00	0.80	18.50
2FG1210	1200	1000	150	1.50	6.00	0.80	23.50
2FG1212	1200	1200	150	1.50	8.00	1.00	27.80
2FG1311	1300	1100	150	1.50	6.00	1.00	22.70
2FG1411	1400	1100	150	1.50	6.00	1.00	26.30
2FG1614	1600	1400	150	1.50	8.00	1.00	29.00
2FGA1412	1400	1200	150	2.00	8.00	1.30	29.60
2FGB1412	1400	1200	150	1.50	8.00	1.00	26.40
2FGI4-1614	1600	1400	150	2.00	10.00	1.20	34.90
2FGI8-1614	1600	1400	150	2.00	10.00	1.40	40.00

Top Side

Opposite Side



With three runners (Series 3G)

Model No.	Dimensions			Max Loading Capacity (MT)			Pallet Wt. (Kg)
	L (mm)	B (mm)	H (mm)	Dynamic Load (Metric Tonnes)	Static Load (Metric Tonnes)	Rack Load (Metric Tonnes)	
3G1008	1000	800	160	1.00	4.00	0.50	10.10
3G1010	1000	1000	160	1.00	4.00	0.50	12.00
3G1111	1100	1100	155	1.00	4.00	0.60	14.60
3G1208	1200	800	155	1.00	4.00	0.50	11.60
3G1210	1250	1000	160	1.50	4.00		15.70
3G1311	1300	1100	155	1.20	6.00	0.60	16.50
3GA1210	1200	1000	160	1.40	6.00	0.70	16.10
3GB1210	1200	1000	165	1.20	6.00	0.60	13.70
3GC1210	1200	1000	155	1.20	6.00	0.60	13.90
3GH1212	1200	1200	170	1.20	6.00	0.80	20.60
3GI3-1210	1200	1000	165	1.50	6.00	0.80	16.70
3GI4-1208	1200	800	155	1.50	6.00	0.70	14.00
3GI4-1210	1200	1000	155	1.50	6.00	0.70	16.70
3GI4-1311	1300	1100	155	1.50	6.00	0.80	19.60
3GI7-1208	1200	800	155	1.50	8.00	1.00	17.60
3GI8-1210	1200	1000	155	1.50	8.00	1.00	20.00
3GI8-1311	1300	1100	155	1.50	6.00	1.00	23.50
3GI4-1111	1100	1100	155	1.50	6.00	0.80	18.10
3GI8-1111	1100	1100	155	1.50	8.00	1.00	21.60
3GL1212	1200	1200	170	1.20	6.00	0.80	19.00

Top Side



Bottom side



With 9 Feet (Series 9F)

Model No.	Dimensions			Max Loading Capacity (MT)			Pallet Wt. (Kg)
	L (mm)	B (mm)	H (mm)	Dynamic Load (Metric Tonnes)	Static Load (Metric Tonnes)	Rack Load (Metric Tonnes)	
9FA1210	1200	1000	130	1.00	4.00	Not suitable for rack loading	13.80
9FB1210	1200	1000	140	1.00	4.00	Not suitable for rack loading	13.85
9FH1412	1400	1200	140	1.20	6.00	Not suitable for rack loading	22.20

Top Side



Bottom Side



With 9 feet (Series 9F)

Model No.	Dimensions	Max Loading Capacity (MT)	
-----------	------------	---------------------------	--

	L (mm)	B (mm)	H (mm)	Dynamic Load (Metric Tonnes)	Static Load (Metric Tonnes)	Rack Load (Metric Tonnes)	Pallet Wt. (Kg)
9FG1111	1100	1100	145	0.50	1.50	Not suitable for rack loading	10.80
9FG1211	1200	1100	140	0.50	1.20	Not suitable for rack loading	8.60
9FG1212	1200	1200	140	0.40	1.50	Not suitable for rack loading	9.40
9FGA1210	1200	1000	140	0.40	1.20	Not suitable for rack loading	7.80

Top Side



Bottom Side



With Cross Bottom (Series XG)

Model No.	Dimensions			Max Loading Capacity (MT)			Pallet Wt. (Kg)
	L (mm)	B (mm)	H (mm)	Dynamic Load (Metric Tonnes)	Static Load (Metric Tonnes)	Rack Load (Metric Tonnes)	
XG1208	1200	800	150	1.00	4.00	0.40	12.00
XG1212	1200	1200	150	1.20	6.00	0.80	20.00
XG1311	1300	1100	150	1.00	4.00	0.60	15.80
XGA1111	1100	1100	150	1.00	4.00	0.40	12.00
XGA1210	1200	1000	125	0.60	1.50	0.20	8.05
XGB1111	1100	1100	150	1.00	5.00	0.60	14.80
XGB1210	1200	1000	150	1.00	4.00	0.50	12.50
XGC1111	1100	1100	125	0.50	1.50	0.20	8.50
XGC1210	1200	1000	150	1.20	5.00	0.60	13.90

Top Side



Bottom Side



PALLET-LOADS :



Static load: Weight that a pallet can carry, placed on a flat floor.



Dynamic load: Weight that a pallet can carry in motion, like when it is placed on the forks of a forklift.



Racking load: Weight that a pallet can carry when placed in a pallet-rack.

Heavy Duty Pallets

With grid (Series 2FGI)

Model No.	Dimensions			Max Loading Capacity (MT)			Total Wt. (Kg)
	L (mm)	B (mm)	H (mm)	Dynamic Load (Metric Tonnes)	Static Load (Metric Tonnes)	Rack Load (Metric Tonnes)	
2FGI4-1614	1600	1400	150	2.00	10.00	1.20	34.90
2FGI8-1614	1600	1400	150	2.00	10.00	1.40	40.00

Top Side



Opposite Side



Flat three runner (Series 3FLI)

Model No.	Dimensions			Max Loading Capacity (MT)			Total Wt. (Kg)
	L (mm)	B (mm)	H (mm)	Dynamic Load (Metric Tonnes)	Static Load (Metric Tonnes)	Rack Load (Metric Tonnes)	
3FLI4-1210	1200	1000	150	1.50	6.00	0.80	20.00
3FLI7-1210	1200	1000	150	1.50	6.00	1.00	20.40

Top Side



Bottom side



Grid with three runners (Series 3G)

Model No.	Dimensions			Max Loading Capacity (MT)	
-----------	------------	--	--	---------------------------	--

	L (mm)	B (mm)	H (mm)	Dynamic Load (Metric Tonnes)	Static Load (Metric Tonnes)	Rack Load (Metric Tonnes)	Total Wt. (Kg)
3GH1212	1200	1200	170	1.20	6.00	0.80	20.60
3GI3-1210	1200	1000	165	1.50	6.00	0.80	16.70
3GI4-1208	1200	800	155	1.50	6.00	0.70	14.00
3GI4-1210	1200	1000	155	1.50	6.00	0.70	16.70
3GI4-1311	1300	1100	155	1.50	6.00	0.80	19.60
3GI7-1208	1200	800	155	1.50	8.00	1.00	17.60
3GI8-1210	1200	1000	155	1.50	8.00	1.00	20.00
3GI8-1311	1300	1100	155	1.50	6.00	1.00	23.50
3GI4-1111	1100	1100	155	1.50	6.00	0.80	18.10
3GI8-1111	1100	1100	155	1.50	8.00	1.00	21.60

Top Side



Bottom Side



With Cross Bottom (Series XGI)

Model No.	Dimensions			Max Loading Capacity (MT)			
	L (mm)	B (mm)	H (mm)	Dynamic Load (Metric Tonnes)	Static Load (Metric Tonnes)	Rack Load (Metric Tonnes)	Total Wt. (Kg)
XGI1210	1200	1000	150	1.50	8.00	0.80	16.80

Top Side

Bottom Side



PALLET-LOADS :



Static load: Weight that a pallet can carry, placed on a flat floor.



Dynamic load: Weight that a pallet can carry in motion, like when it is placed on the forks of a forklift.



Racking load: Weight that a pallet can carry when placed in a pallet-rack.

Mat Pallets

Model No.	Dimensions			Max Loading Capacity (MT)			Total Wt. (Kg)
	L (mm)	B (mm)	H (mm)	Dynamic Load (Metric Tonnes)	Static Load (Metric Tonnes)	Rack Load (Metric Tonnes)	
M0804	843	456	63	-	0.30	Not suitable for rack loading	3.25
M1412	1400	1200	76	-	5.00	Not suitable for rack loading	17.00
M1515	1500	1500	76	-	6.00	Not suitable for rack loading	23.20

Top Side



Bottom side



PALLET-LOADS :



Static load: Weight that a pallet can carry, placed on a flat floor.



Dynamic load: Weight that a pallet can carry in motion, like when it is placed on the forks of a forklift.



Racking load: Weight that a pallet can carry when placed in a pallet-rack.